

**IMPORTANT WARRANTY INFORMATION PLEASE READ  
FILL OUT AND RETURN ENCLOSED WARRANTY CARD**

THIS WARRANTY COVERS:  
#1187 Tomato/Fruit Juicer Attachment  
THE WARRANTY IS EXTENDED TO THE ORIGINAL PURCHASER ONLY.

**WARRANTY DURATION:** This product is warranted to the original purchaser for a period of one (1) year from the original purchase date. **EACH UNIT COMES WITH A WARRANTY CARD, WHICH MUST BE FILLED OUT COMPLETELY AND RETURNED IMMEDIATELY, WITH A COPY OF THE PURCHASING RECEIPT. FAILURE TO RETURN YOUR WARRANTY CARD WILL LIMIT WARRANTY TO 90 DAYS WITH PROOF OF PURCHASE.**

**WARRANTY COVERAGE:** This product is warranted against defective materials or workmanship. The warranty is void if the product has been damaged by accident, misuse, neglect, modification or improper service or repairs by unauthorized personnel. It is also void if damaged in shipment or by other causes not arising out of defects in the materials or workmanship. This warranty does not extend to any units which have been in violation of written instructions furnished. This warranty covers only the product and its specific parts, not food or other products processed in it.

**WARRANTY DISCLAIMERS:** This warranty is in lieu of all warranties expressed or implied, and no representative or person is authorized to assume any other liability in connection with the sale of our products. There shall be no claims for defects or failure of performance under any theory of sort, contract or commercial law including, but not limited to negligence, gross negligence, strict liability or breach of contract. The manufacturer declines all responsibility for damage to persons, things or animals arising from the failure to comply with the norms contained in this manual. The manufacturer reserves the right to make modifications at anytime to the models while maintaining the main characteristics described herein. The manufacturer also declines all responsibility for any errors in compiling this manual.

**WARRANTY PERFORMANCE:** During the above one year warranty period, a product with a defect will either be repaired or replaced after the product has been inspected by an LEM Service Technician. **LEM RESERVES THE RIGHT TO REFUSE WARRANTY PERFORMANCE OR PRODUCT EVALUATION UNLESS THE ORIGINAL SALES RECEIPT OR THE WARRANTY CARD IS ON FILE.** The repaired or replacement product will be in warranty for the balance of the one year warranty period. No charge will be made for such repair or replacement.

**IMPORTANT NOTICE:** If any parts are missing or defective, please contact our Customer Service Department for assistance at 877-536-7763. (M-F 8:30am to 4:30pm EST) **DO NOT RETURN TO THE STORE WHERE THE PRODUCT WAS PURCHASED.**

**LEM PRODUCTS MERCHANDISE RETURN POLICY WARRANTY SERVICE:**

To obtain service under terms of this warranty, please contact us at 877-536-7763 to obtain authorization prior to returning the merchandise. No merchandise will be accepted without prior authorization. Please return the product pre-paid in the original packaging if possible. Enclose a copy of your receipt, (Keep a copy of your proof of purchase for your records) and include a written explanation of the issue. Ship to LEM Products, 4440 Muhlhauser Rd., Suite 300, West Chester, OH 45011. LEM Products is not responsible for damage incurred in shipping, make certain to pack product properly. Return shipping charges are the responsibility of the purchaser. Packages returned to LEM should be insured for the value of the product to cover any damages that may occur during shipping.

Revised October 2, 2015

THE LEADER IN GAME PROCESSING



# TOMATO / FRUIT JUICER ATTACHMENT

## USE & MAINTENANCE

1187



**1 YEAR  
WARRANTY**

## ⚠ GENERAL WARNINGS AND SAFETY INFORMATION ⚠

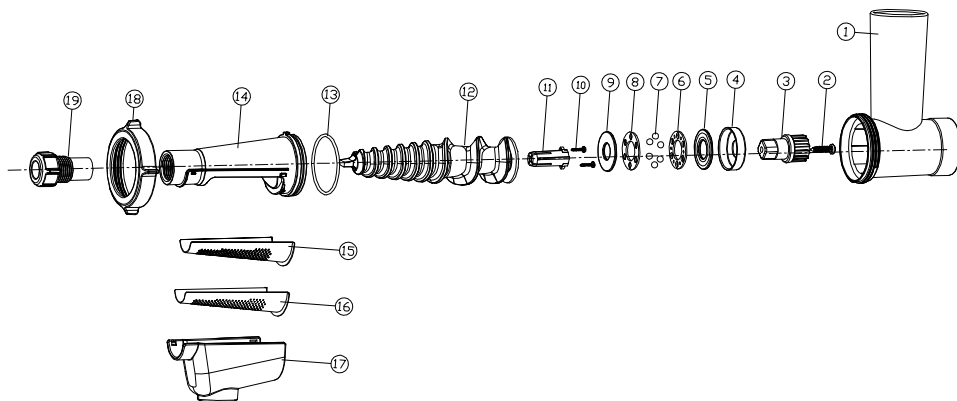
IT IS IMPORTANT TO READ AND UNDERSTAND ALL OF THE INSTRUCTIONS AND SAFEGUARDS PRIOR TO USE

REFER TO YOUR GRINDERS SAFETY PRECAUTIONS FOR MOTOR SAFETY PRIOR TO OPERATION

1. Always ensure that the appliance is properly assembled and safely set up before use.
2. **DO NOT** leave the appliance unattended if it can be switched on and operated.
3. **CAUTION:** This appliance is not recommended for use near or by children or persons with certain disabilities. Set up and store the appliance out of reach of children. When not in use, store device in a secure and dry place out of reach of children.
4. The appliance is designed for domestic use and not for commercial purposes.
5. Use the appliance with the supplied accessories only. **WARNING:** The use of attachments not recommended or sold by the manufacturer may cause injury, damage to personal property, and may void your warranty.
6. **WARNING:** Do not use while under the influence of alcohol or drugs (prescription or non-prescription) as these may impair user's ability to properly assemble or safely operate the appliance.
7. The manufacturer declines any responsibility in the case of improper use of this product. Improper use of this product voids the warranty.
8. Avoid contacting moving parts. Wait until all parts have come to a complete stop and disconnect from the power source before removing any parts of the juicer.
9. Never feed food into appliance by hand as serious injury may occur, always use your stomper.
10. Thoroughly hand-wash all appliance parts in warm soapy water prior to use. Do not soak. **NOT DISHWASHER SAFE**
11. Tie back loose hair and clothing. Remove neckties, rings, watches, bracelets or other jewelry before operating the grinder.
12. Use appliance on a level, stable surface to prevent tipping. Never move the appliance while unit is in use.

## 13. SAVE THESE INSTRUCTIONS

## PARTS LIST



## PARTS LIST

Part #	Description	Part #	Description
1	Juicer Head	11	Screw Stopper
2	Screw (ST5.0×20)	12	Auger
3	Drive Gear	13	Gasket
4	Bearing Seal	14	Funnel
5	Upper Bearing Support	15	Screen 1.5mm
6	Bearing Bracket A	16	Screen 1.0mm
7	Stainless Steel Ball	17	Juice Catcher
8	Bearing Bracket B	18	Retaining Ring
9	Lower Bearing Support	19	Threaded Waste Adjuster
10	Screw (ST2.5×10)		

## ASSEMBLY INSTRUCTIONS

1. Attach the Juicer Head (#1) to your 1182/1113 grinder motor.
  - Line up the head at 2 o'clock and turn counter clockwise to lock into place.
  - It may be necessary to push the release button when putting on the head on the motor.
2. Insert the Auger (#12) into the head.
  - Turn the Auger to line up the Auger Gear with the Motor Gear.
3. Insert the choice Screen (#15 or #16) into the Juicer Funnel (#14).
  - Line up the screen on the inside of the funnel over the cut out. Press firmly into place. The lip of the screen will sit flat against the funnel.
4. Attach Funnel (#14) to Juicer Head (#1).
  - Line up the locating pin to the notch in the threads of Juicer Head (#1).
5. Place Retaining Ring (#18) over Funnel (#14) and thread onto Juicer Head (#1).
6. Insert translucent Juice Catcher (#17) over the Screen (#15 or #16) and snap into place.
7. Hand tighten the Threaded Waste Adjuster (#19) onto funnel end.
  - This piece is necessary to insure the auger has a tight fit in the back of the head so juice will not flow back to the motor.
8. Insert your grinders pan into the feed tube of the Juicer Head (#1).
9. You're now ready to make juice.

## USING YOUR JUICER ATTACHMENT

Before use hand wash the juicer in warm soapy water.

### Prepare fruits for juicing:

- Always use ripened fruits that are at the peak of freshness. This will render the most flavorful juice.
- Fruit or vegetables which are hard should be left to ripen or steamed to soften.
- It is not necessary to peel or seed your fruits.
- Large pits or seeds should be removed.
- Large fruits should be cut to fit into juicer head.
- Use your grinder stomper to press fruit into the juicer.
- You will need 2 bowls; one to catch the waste of the fruit and one for the juice.
- You can always pass the waste material back through the juicer to extract all available juice.