



**ATTENTION:**  
If any components of this unit are broken,  
or if the unit does not operate properly,  
please contact LEM Products at  
**877-536-7763**  
Find more great products and request a  
free catalog at [lemproducts.com](http://lemproducts.com)

Scan our QR code  
for more information  
and helpful videos



# BIG BITE® DUALGRIND ADAPTER

## USE & MAINTENANCE

#8 (1723), #12 (1724), #22 (1725), #32 (1726)

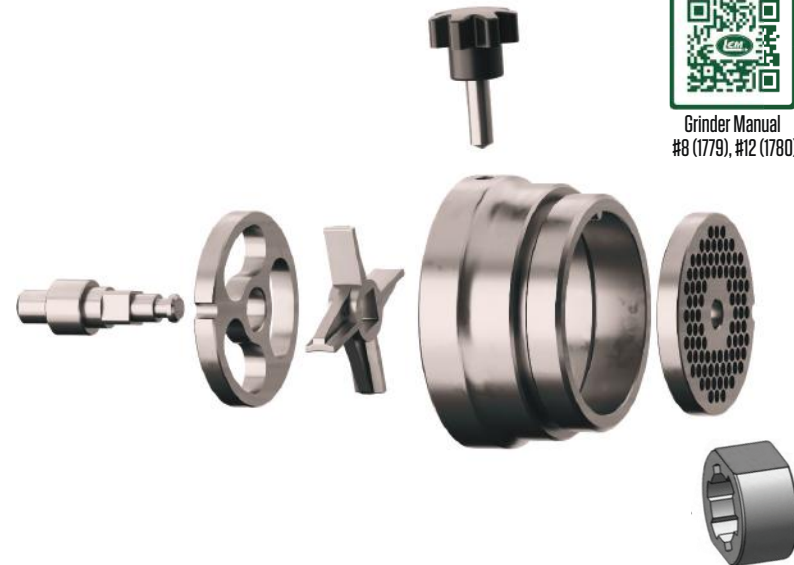
Scan the QR codes below for the  
most updated version of the  
BigBite® Grinder manuals.



Grinder Manual  
#8 (1779), #12 (1780)



Grinder Manual  
#22 (1781), #32 (1782)



## ⚠ WARNING

Never use the DualGrind Adapter and BigBite Grinder without the Meat Pan in place. Severe injury could occur.

**2 YEAR  
WARRANTY**

## ⚠ IMPORTANT SAFETY INFORMATION

### ⚠ WARNING

**Never use the DualGrind Adapter and BigBite Grinder without the Meat Pan in place. Severe injury could occur. Keep hands a safe distance from the moving parts of the grinder head. Use a meat stomper to feed the meat into the grinder head.**

**IT IS IMPORTANT TO READ AND UNDERSTAND ALL OF THE INSTRUCTIONS AND SAFEGUARDS PRIOR TO USE.**

## SAVE THIS MANUAL

Every user must read and fully understand this manual and its contents, especially the Important Safety Information, before using or operating the unit. This manual must accompany this unit. Please refer to the Use & Maintenance manual that came with your grinder for further safety information.

**Questions? Call LEM Products technical assistance toll-free: 877-536-7763**

**With use of this product, you will use your BigBite grinder. All instructions and safety warnings that came with your grinder must be followed. See the QR codes on the front cover for the most updated version of the BigBite Grinder manuals or to have a printed copy of the manual mailed to you, please call 877-536-7763.**

### General Safety Information

- Use the unit only for its intended use. Indoor use only. Household use only. Improper use of this unit voids the warranty.
- This unit is not intended for use by persons (including children) with reduced physical, sensory, or mental capabilities, or lack of experience and knowledge, unless they have been given supervision or instruction concerning use of the unit by a person responsible for their safety. Children should be supervised to ensure that they do not play with the unit.
- Knife and plates are sharp! To avoid injury, use caution when handling.
- Do not use while under the influence of alcohol or prescription or non-prescription drugs as these may impair your ability to properly assemble or safely operate the unit.
- Use the unit with supplied attachments only. The use of attachments not recommended or sold by the manufacturer may cause injury, damage to personal property and may void your warranty.
- The manufacturer declines any responsibility in the case of improper use of this unit.
- DO NOT use the DualGrind Adapter to grind bones — even soft bones. Doing so may damage the unit and will void your warranty.
- Read all warnings and instructions in this manual and your BigBite Grinder manual. In addition, use common sense; your personal safety is your responsibility. Failure to follow warnings and safety information could result in death, serious bodily injury, and/or property loss.

### Safety Information Before Use

- Always ensure that the unit is properly assembled and safely set up before use. Set up and store the unit out of reach of children.
- Tie back loose hair and clothing to prevent them from getting caught in moving parts and causing injury. Remove neckties, rings, watches or other jewelry before operating the grinder.

### IMPORTANT WARRANTY INFORMATION PLEASE READ FILL OUT AND RETURN ENCLOSED WARRANTY CARD

THIS WARRANTY COVERS:  
1723, 1724, 1725, 1726 BiteBite DualGrind Adapter  
THE WARRANTY IS EXTENDED TO THE ORIGINAL PURCHASER ONLY

**WARRANTY DURATION:** This product is warranted to the original purchaser for a period of two (2) years from the original purchase date. **EACH UNIT COMES WITH A WARRANTY CARD, WHICH MUST BE FILLED OUT COMPLETELY AND RETURNED IMMEDIATELY, WITH A COPY OF THE PURCHASING RECEIPT. FAILURE TO RETURN YOUR WARRANTY CARD WILL LIMIT WARRANTY TO 90 DAYS WITH PROOF OF PURCHASE.**

**WARRANTY COVERAGE:** This product is warranted against defective materials or workmanship. The warranty is void if the product has been damaged by accident, misuse, neglect, modification or improper service or repairs by unauthorized personnel. It is also void if damaged in shipment or by other causes not arising out of defects in the materials or workmanship. This warranty does not extend to any units which have been in violation of written instructions furnished. This warranty covers only the product and its specific parts, not food or other products processed in it.

**WARRANTY DISCLAIMERS:** This warranty is in lieu of all warranties expressed or implied, and no representative or person is authorized to assume any other liability in connection with the sale of our products. There shall be no claims for defects or failure of performance under any theory of tort, contract or commercial law including, but not limited to negligence, gross negligence, strict liability or breach of contract. The manufacturer declines all responsibility for damage to persons, things or animals arising from the failure to comply with the norms contained in this manual. The manufacturer reserves the right to make modifications at anytime to the models while maintaining the main characteristics described herein. The manufacturer also declines all responsibility for any errors in compiling this manual.

**WARRANTY PERFORMANCE:** During the warranty period, a product with a defect will either be repaired or replaced after the product has been inspected by an LEM Service Technician. **LEM RESERVES THE RIGHT TO REFUSE WARRANTY PERFORMANCE OR PRODUCT EVALUATION UNLESS THE ORIGINAL SALES RECEIPT OR THE WARRANTY CARD IS ON FILE.** The repaired product will be in warranty for the balance of the five year warranty period. No charge will be made for such repair or replacement.

**IMPORTANT NOTICE:** If any parts are missing or defective, please contact our Customer Service Department for assistance at 877-536-7763 (M-F 8:30 am to 4:30 pm EST). **DO NOT RETURN TO THE STORE WHERE THE PRODUCT WAS PURCHASED.** LEM Products is not responsible for, or will not cover under warranty, missing or damaged parts on discounted/clearance, resale or final sale items where the seller may not be able to guarantee full functionality or completeness of the unit.

**LEM PRODUCTS MERCHANDISE RETURN POLICY WARRANTY SERVICE:** To obtain service under terms of this warranty, please contact us at 877-536-7763 to obtain authorization prior to returning the merchandise. No merchandise will be accepted without prior authorization. Prior to returning the product for warranty repair the product must be thoroughly cleaned and free from any food particles or other debris. Failure of the purchaser to comply with this standard may result in the unit being returned without repair. In some cases, a \$50 cleaning surcharge may apply. Please return the product prepaid in the original packaging if possible, enclose a copy of your receipt, (keep a copy of your proof-of-purchase for your records) and include a written explanation of the issue. Ship to LEM Products, 4440 Muhlhauser Road, Suite 300, West Chester, OH 45011. LEM Products is not responsible for damage incurred in shipping, make certain to pack product properly. Return shipping charges are the responsibility of the purchaser. Packages returned to LEM should be insured for the value of the product to cover any damages that may occur during shipping.

Revised April 06, 2023

## CLEAN-UP, CARE, & STORAGE

Turn off the grinder, unplug it, and allow it to cool.

### To disassemble the DualGrind Adapter:

1. Unscrew the Retaining Ring.
2. Remove Second Grinding Plate. **WARNING!** Knife and plates are sharp! To avoid injury, use caution when handling.\*
3. Loosen the Star Bolt on the Adapter Ring so it is not tight on the Grinder Head. Unscrew and remove the Adapter Ring.  
**Note:** The Star Bolt on the Adapter Ring can be used for leverage when threading on and off the Adapter Ring.
4. Remove DualGrind Knife and First Grinding Plate.

\*You can also remove the adapter, grinder plate, and retaining ring as one piece, and then disassemble them.

Refer to your BigBite Grinder manual for instructions on further disassembling, cleaning, and storing your BigBite Grinder and DualGrind Adapter. See the QR codes on the front cover for the most updated version of the BigBite Grinder manuals or to have a printed copy of the manual mailed to you, please call 877-536-7763.

Hand wash and dry all parts, do not soak or put into the dishwasher.

## TROUBLESHOOTING

Consult the troubleshooting section of your BigBite Grinder manual for problems and solutions. In addition:

If meat is mashing instead of extruding in strings from the grinding plate:

- Check that the Dual Blade Knife is properly installed with the number facing out.
- The Grinding Plates or Dual Blade Knife may have become dull with use and may need replacing. We highly recommend replacing the knife and plates together. These items work in unison and when one is dull it is likely that the others need replacing as well.

All parts will not fit into the grinder head:

- Adapter ring is not installed or auger stud was not fully threaded into the auger.

## Safety Information During Use

- Avoid contacting moving parts to prevent injury. Turn off grinder and unplug and then wait until all parts have come to a complete stop and disconnect from the power source before removing any parts of the DualGrind Adapter.
- Keep fingers out of the throat of the grinder head or serious injury may occur! Use the stomper provided with your grinder — not fingers — to push meat into the throat of the grinder head. Only use grinder with meat pan in place.
- Do not use fingers to scrape food away from the grinding plate while the grinder is running; doing so may cause injury.
- Only use the DualGrind Adapter with your BigBite grinder and with the meat pan properly installed.

The warnings and instructions discussed in this instruction manual cannot cover all possible conditions or situations that could occur. It must be understood by the operator that common sense must be supplied by the operator. Remember your personal safety is your responsibility.

## ABOUT THE BIGBITE DUALGRIND ADAPTER

Save time with two grinds in one pass! This BigBite® DualGrind Adapter is designed for use with your BigBite grinder. It allows you to transform your BigBite Grinder into a DualGrind Grinder so you can get a premium fine grind without needing to grind twice.

Be sure to match your BigBite Grinder with the appropriate DualGrind Adapter:

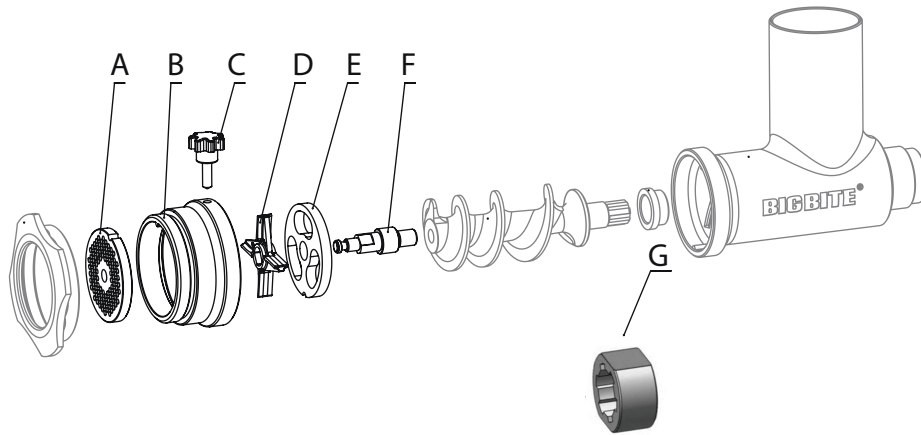
BigBite Grinder Size	SKUs	DualGrind Adapter SKU
#8	1779, 779A	1723
#12	1780, 780A	1724
#22	1781, 781A	1725
#32	1782, 782A	1726

Please refer to the Use & Maintenance manual that came with your grinder for further usage information. See the QR codes on the front cover for the most updated version of the BigBite Grinder manuals or to have a printed copy of the manual mailed to you, please call 877-536-7763.

## CONTENTS

Important Safety Information .....	2,3
About the BigBite DualGrind Adapter .....	3
Table of Contents .....	3
Parts.....	4
Assembly.....	4,5
Clean-up, Care & Storage.....	6
Troubleshooting .....	6
Warranty Information .....	7

## PARTS

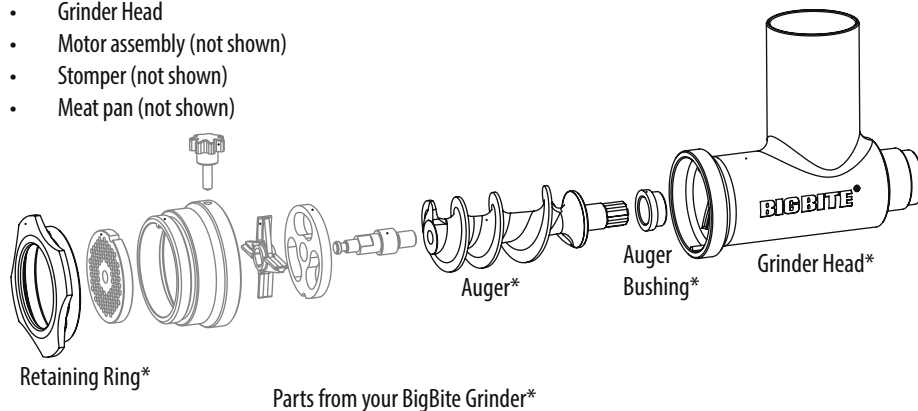


	DESCRIPTION	QTY		DESCRIPTION	QTY
A	Second Grinding Plate	1	E	First Grinding Plate	1
B	Adapter Ring	1	F	Auger Stud	1
C	Star Bolt	1	G	Splined Sleeve Tool	1
D	DualGrind Knife	1			

## ASSEMBLY

**NOTE:** You will use the following parts from your BigBite Grinder:

- Retaining Ring
- Auger
- Auger Bushing
- Grinder Head
- Motor assembly (not shown)
- Stomper (not shown)
- Meat pan (not shown)



## ASSEMBLY

**WARNING!** Wear gloves to protect hands from sharp edges during assembly and disassembly. Ensure the grinder is unplugged and turned off prior to assembly or disassembly of the DualGrind Adapter.

Before use: Thoroughly hand-wash all parts in hot soapy water to remove any grease residue and dirt left from the manufacturing process. Dry thoroughly. Do not put parts in dishwasher; discoloration may occur.

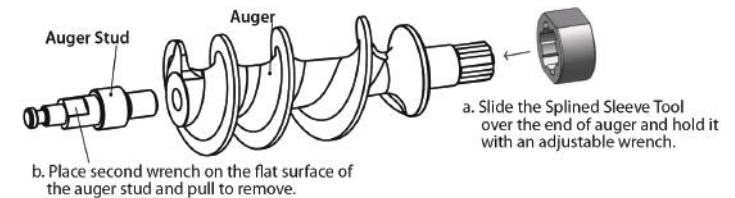
Familiarize yourself with the parts in the DualGrind Adapter. In particular, note that:

- The Dual Blade Knife has a number stamped on one side; this stamped side should face out (facing the Second Grind Plate) when assembling.
- There are two grinding plates: a First Grind Plate and a Second Grind Plate (4.5mm). Both have a notch on the edge of the plate which must be lined up with the locating pins at the bottom of the Grinder Head and the Adapter Ring. The plates can be installed either direction and used on both sides.

To install the DualGrind Adapter to a fully assembled BigBite Grinder:

Tools needed: 2 adjustable wrenches.

1. Turn off and unplug the grinder. Unscrew the Retaining Ring from Grinder Head, and then remove the Grinding Plate and Knife. **WARNING!** Knife and plates are sharp! To avoid injury, use caution when handling. (It is not necessary to remove the Grinder Head from the grinder.)
2. Remove Auger from Grinder Head. Check that Auger Bushing is properly installed; spray with food-grade lubricant.
3. Remove the Auger Stud from the end of the Auger (see diagram below):
  - a. Slide the Splined Sleeve Tool onto the drive end of the Auger as shown, and use an adjustable wrench to hold it in place.
  - b. Use a second adjustable wrench to grasp and unthread the auger stud, torquing it as needed to loosen it.



4. Thread in the new Auger Stud, you received with the DualGrind Adapter, fully into your Auger and turn until finger-tight. Avoid over-tightening; it will tighten with use. Slide the Splined Sleeve Tool off the other end of the Auger.
 

NOTE: The Auger Stud in the DualGrind Adapter is longer than the regular Auger Stud that came with your BigBite Grinder. Keep the original Auger Stud and the splined sleeve in a safe place for future use.
5. Insert the Auger with the new Auger Stud into the Grinder Head until it is fully seated. NOTE: If you removed the Grinder Head from the grinder, reattach it before inserting the Auger.
6. Install the new First Grinding Plate (included with your kit), lining up the locating pin in the head with the notch in the plate.
7. Examine the Dual Blade Knife, noting which side has the number stamped on it. Install the Knife with the stamped side facing out.
8. Thread on the Adapter Ring, then thread in and tighten the Star Bolt. The Star Bolt is there to hold the adapter securely and prevent it from loosening during use. NOTE: The locating pins in the Grinder Head and the Adapter Ring may not line up; this is to be expected.
 

NOTE: The Star Bolt may leave a small mark on your Grinder Head; this cannot be avoided.
9. Install the Second Grinding Plate (included with your kit), lining up the locking pin in the Adapter Ring with the notch on the plate. The plate will stick out slightly past the end of the adapter.
10. Thread on the retaining ring. Do not over-tighten. Overtightening will cause undue wear to the knife, plates, and bushing.
11. Your BigBite Grinder with DualGrind Adapter is ready for use.